

COLASP



WEEKLY BULLETIN

KEY DATES

5TH MARCH - WORLD BOOK DAY

6TH MARCH - INSET DAY

17TH MARCH - YR 8,9 PARENT DAY/SCHOOL CLOSED [1:30 - 7PM]

20TH MARCH - WORLD POETRY DAY

25TH MARCH - WORLD THEATRE DAY

TERM DATES

TERM DATES 2025/2026

Autumn Term

2nd, 3rd, 4th September - INSET Days/ School closed
5th September - Y7 ONLY Dress Rehearsal Day/ INSET DAY for Y8
- 11 & HCS
8th September - All students return
11th September - Y11 Parents evening
20th October - Trust INSET Day/ School closed
21st October - Y7-13 Pastoral day/ School closed

Half term 27th - 31st October

10th November - Y11 & 13 Parent day/ School closed
28th November - School Closed
15th December - Y11 Mock Parents evening
18th December - Last day of term

Spring Term

13th January - Y10, 7 & 12 Parent day/ School closed

Half Term 16th - 20th February

6th March - INSET day/ School closed
17th March - Y8 & 9 Parent Day/ School closed
27th March - Last day of term

Summer Term

Half term 25th - 29th May

8th June - Pastoral Day & Year 6 Admission Interviews/ School closed
26th June - Trust INSET Day/ School closed
2nd & 3rd July - INSET Days/ School closed
18th July - Last day of term



COLASP

A HUGE CONGRATULATIONS TO ALL THE STUDENTS LISTED BELOW:

TOP MERIT WINNERS

1ST	2ND	3RD
Isaac Kebede (Year 7)	Asmin Ada Bektas (Year 7)	Hiranur Cepik (Year 7)
Lilia Tagawa-Lakhani (Year 8)	Erva Anlaroglu (Year 8)	Duru Ulunur (Year 8)
Niko Evans (Year 9)	Zehra Mei Dennys-McClure (Year 9)	Mitsuki Blanco Mori (Year 9)
Medine Sucu (Year 10)	Nabiha Begum (Year 10)	Holly Dadzie (Year 10)
Kayliah Adje (Year 11)	Jayden Chimborazo- Arenas (Year 11)	Naomi Ogbeide (Year 11)

TOP ATTENDANCE WINNERS

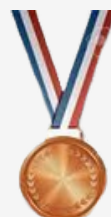
W/C 2ND MARCH 2026



GOLD
7AL 99.3%



SILVER
8AL 98.95%



BRONZE
9AL 98%

PUNCTUALITY, ATTENDANCE AND AM REGISTRATION

We would like to remind parents/carers of the importance of regular and punctual attendance at school. Our school day begins promptly at **8:37 am** and AM registers close at **9:15 am**.

If your child arrives after 9:15 am, this will be recorded as an unauthorised absence for the entire morning session, in line with our school attendance policy and DFE guidelines.

1 day off school unauthorised, amounts to 2 unauthorised absences due to the legal requirements of a AM and PM register mark in a school day.

Please note medical evidence is required for all illnesses to be authorised. This includes prescriptions, appointment cards, medication or confirmation from a medical professional. Without medical evidence all absences will be recorded as unauthorised.

If a student arrives when the gate has closed, they are late for school and will receive a punctuality detention.

Detentions will be set for the following day after the student is late.

...the 1st time that half term: **Yellow (20 minutes)** detention the next day

...the 2nd time that half term: **Amber (40 minutes)** detention the next day

...the 3rd time that half term: **Red (80 minutes)** detention the next day

...more than 3 times that half term, they will receive a **red (80 minutes)** detention the next day

...after 9:15am the student will receive an **Amber (40 minutes)** detention

COLASP News

Starting this week, the History Department will be running KS3 History Homework Club on Thursdays after school, from 3.30-4pm, in room 218. This will give students the opportunity to complete their weekly Seneca homework assignments or to discuss any homework issues they are having with their teachers. It is open to any student in KS3 who wishes to attend. If you have any questions, please let me know.

Mr Cashman

COLASP News

FUNDRAISING UPDATE: Thank you so much to all who have donated to our Student Trip Access Fund! We are now 50% of the way to our target of raising £7500 thanks to the generosity of COLASP parents and our wider community helping school trips become more accessible to all.

Please continue supporting your child in raising online donations for their 3/5km sponsored walk/run which they will be completing in PE after half-term, and encourage them to come up with their own fundraising ideas to help us reach 100% of our target and beyond!

Mr Barrie

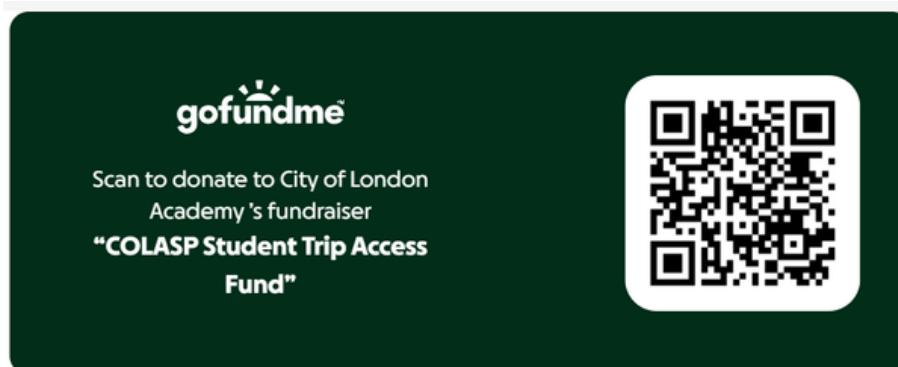
As a school we seek to provide as many opportunities for learning outside the classroom as possible. Whilst we are always looking for grants and funded options, not all trips can be covered.

We have therefore created the 'COLASP Student Trip Access Fund' with the aim of raising money to support those who may otherwise not be able to afford some trips. Examples of trips this fund will initially support are the ski trip, Duke of Edinburgh and Iceland.

To make fundraising as easy as possible we have created a GoFundMe page.

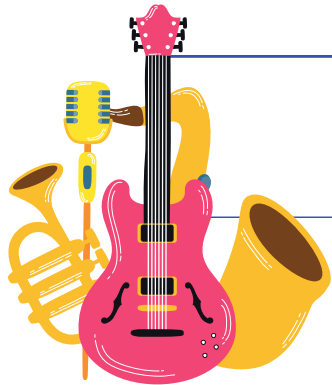
All donations however small would be greatly received, as would any and all sharing of the fundraising page with friends, neighbours, colleagues etc.

Students are also encouraged to come up with fundraising ideas for which they can now simply share the QR code below to collect donations.



Thank you in advance for any sharing and donations!

Should you have any questions about this, please get in touch with **Mr Barrie**



AFTER SCHOOL CLUBS 3:30PM - 4:30PM

MONDAYS

DIT/ Study Club - Year 11
Homework Club

TUESDAYS

Additional studies - Years 7 - 10
DIT/ Study Club - Year 11

WEDNESDAYS

Year 9 & 10 Girls Football (CSP)
Year 7 & 8 Girls football (SKA)
Combined Cadets Force CCF - Year 9 Cadets (EFO + BST)
15:15 - 18:00 at City of London Academy Islington
DIT/ Study Clubs - Year 11
Year 7 & 8 Junior Choir (HCA)
Year 9-13 Senior Choir 4:15pm - 5pm
Homework Club

THURSDAYS

Year 8 Boys football (CSP)
Sparx club
KS3 & 4 Netball Club (AGT)
DIT/ Study Club - Year 11
Homework Club

FRIDAYS

Year 9 boys Football (SKA)
KS3 & 4 Pickleball (AGT/AKI)
DIT/ Study Clubs - Year 11
Homework Club



UNIFORM

ALL STUDENTS MUST WEAR THE FULL SCHOOL UNIFORM AND PROFESSIONALLY PRESENT THEMSELVES.

- Academy blazer
- Academy jumper (compulsory during Autumn & Spring term)
- Academy blouse / long-sleeved shirt and tie (Yr 7-9 white/Yr 10-11 Blue)
- Academy ties are provided for sixth-form students
- Flat plain black school shoes*
- Grey school skirt/trousers
- Plain black ankle socks or tights
- Academy rucksack - the only bag to be used for carrying school equipment such as books and a pencil case
- *Boots, Kickers, and Dr Martin shoes are not permitted, and shoes must not have any branding. They must be black all over, including stitching and soles.

Additional/Optional Items

- Academy winter jacket
- Year 7 - Navy or Royal Blue Academy coat
- Year 8 - 11 Navy or Royal Blue Academy coat or plain black coat (allowed between October - March only) - all trims and fur must be black. (Black denim, fur, and leather coats and hoodies are not permitted)
- Academy hat - Students are not permitted to wear their own hats to school.
- Extra rugby shirt or polo shirt
- Only plain black gloves, scarves, and umbrellas are allowed.
- Jumpers are optional in the summer term only.
- Jewellery, hair, and make-up
- No watches are to be worn except plain watches (no Smartwatches or fitness trackers).
- No jewellery is allowed other than plain metal studs. One small, plain metal (silver or gold), discreet stud in each ear.
- Hair must be tied back for PE, DT and science, and worn in a style appropriate to a business environment, without shaved lines

BEHAVIOUR

The Behaviour Team provides daily support with parental enquiries about behaviour & detentions. To discuss your queries, please call the Academy on 020 3011 2162 and select **Option 3**; alternatively, you can email the behaviour team to support at **behaviour@shoreditch.cola.org.uk** or at the end of the school day a member of the behaviour is in the reception from 3:30 till 4.

LEADERSHIP SURGERY

Our daily Leadership Surgery is changing to an appointment-only booking system to minimise waiting times and ensure that all parents can be seen in a fair and systematised way. Slots are available **Tuesday-Friday** at **9am, 9.15am and 9.30am**. Please call reception or email **enquiries@shoreditch.cola.org.uk** to book your slot, giving the name of your child and the reason you are requesting the meeting.

SENDCO

If you think your child might have SEND, you should first contact their teachers to find out more about your child's attainment and progress. If your child's teacher has further concerns, they will make a referral to the Special educational needs and disabilities coordinator.

Support your child can receive:

Your child may be eligible for the following:

SEN support - support given in school, like speech therapy

Parents can send any documents/referrals directly to the SEN department.

SEND@SHOREDITCH.COLA.ORG.UK

An education, health and care (EHC) plan - a plan of care for children and young people aged up to 25 who have more complex needs

SAFEGUARDING

The City of London Academy Shoreditch Park Safeguarding Team
If you have any concerns about a child's welfare or safety, please speak to a member of the school's safeguarding team.

MR IAN WHITE - DESIGNATED SAFEGUARDING LEAD (DSL)

MR ANTHONY BLAZIE / MS IMAN HOWDEN - DEPUTY DESIGNATED SAFEGUARDING LEAD (DDSL)

SAFEGUARDING@SHOREDITCH.COLA.ORG.UK



If you need more urgent support, you can telephone
ChildLine (number: 0800 1111) or
text Shout (number: 85258)